

REF. WORK SCHEDULE

(1) & (4) - NEW INTERNAL PARTITIONS (Studwork)

To be twin 50 x 75 mm Timber stud partitions, at max. 400 mm centres with a min. 50mm gap between studs, covered with 12 mm Ex. grade plywood, screw fixed with stainless steel screws at max. 150 mm centres. 75mm Rockwool Roll Bat Acoustic installation within studs. Over clad with 2 layers of 15 mm Gyproc Wallboard with all four edges supported and fixed with 41 mm Gyproc Drywall Timber Screws at max. 300 mm (reducing to 200 mm centres to external angles) centres to all supports. Joints to be filled and reinforced with jute scrim 90 mm wide and plastered with Thistleboard finish applied in 2 No. coats 5 mm thick overall, all in accordance with manufacturers instructions. Plaster board to be carried up over beam and fire sealed against ceiling.

(2) - NEW INTERNAL DOOR

FD30 door to match existing, with glassed screen and self closure device.

(3) - REMOVE NONE LOAD BEARING WALL

Structural Engineers' have confirmed the wall is none load bearing and suitable for removal. Confirmation letter of the same to be received prior to removal.

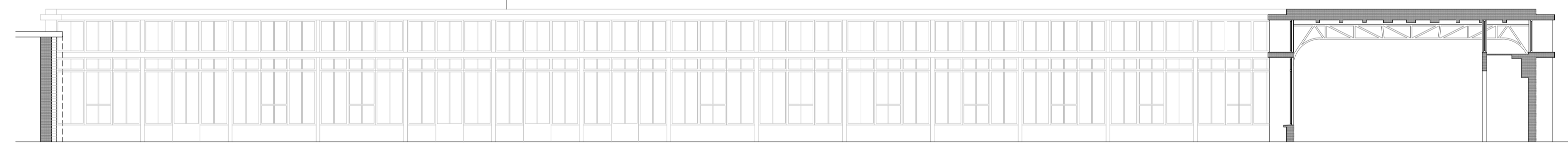
(5) & (6) - REMOVE DOOR

Remove existing doors and frames. In fill opening with 50 x 75 mm timber stud infill, at max. 400 mm centres with a min. 50mm gap between studs, over clad with 2 layers of 15 mm Gyproc Wallboard, 75mm Rockwool Roll Bat Acoustic installation within stud. All four edges supported and fixed with 41 mm Gyproc Drywall Timber Screws at max. 300 mm (reducing to 200 mm centres to external angles) centres to all supports. Joints to be filled and reinforced with jute scrim 90 mm wide and plastered with Thistleboard finish applied in 2 No. coats 5 mm thick overall, all in accordance with manufacturers instructions.

(S) - SMOKE DETECTOR

Smoke detector linked to existing system.

SECTION A-A

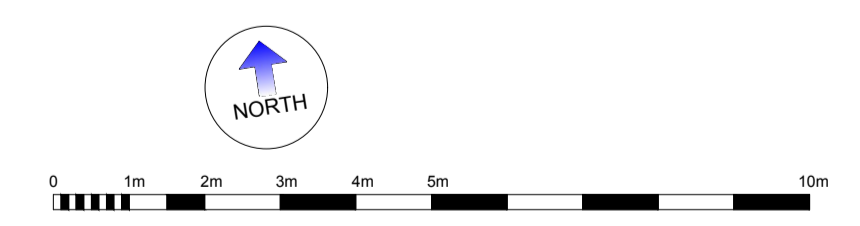


SECTION B-B



REV.#	DATE	NAME	NOTES

Notes:
Do not scale this drawing.
All levels and dimensions are to be checked on site.
This drawing is to be read in conjunction with all relevant consultants drawings and specifications, together with safety plan requirements.
Copyright: This drawing must not be copied, amended nor reproduced without the prior written agreement.



BUILDING SOLUTIONS CONSULTANTS LTD.
34 Boundary Road, Hove, East Sussex, UK, BN1 4EF. Tel: 0845-686-0036. Fax: 0845-686-0063

PROJECT: Pre-Prep School, Hurstpierpoint College			
DRAWING: Proposed Plans and Sectional Elevations			
STAGE: Planning and Building Control Approval	JOB NO.: 689	DATE: 17/04/2018	
DWG NO.: AL-102	SCALE: 1:100 @A2	REVISION: .	DRAWN: DB
<small>Do not scale. Use figured dimensions only. Check dimensions on site with BSIC if any discrepancies. Copyright © BSIC Ltd.</small>			