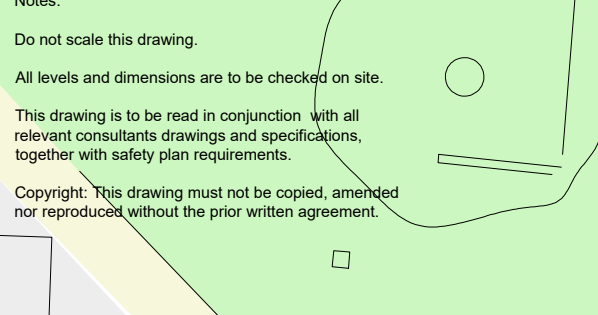


Notes:

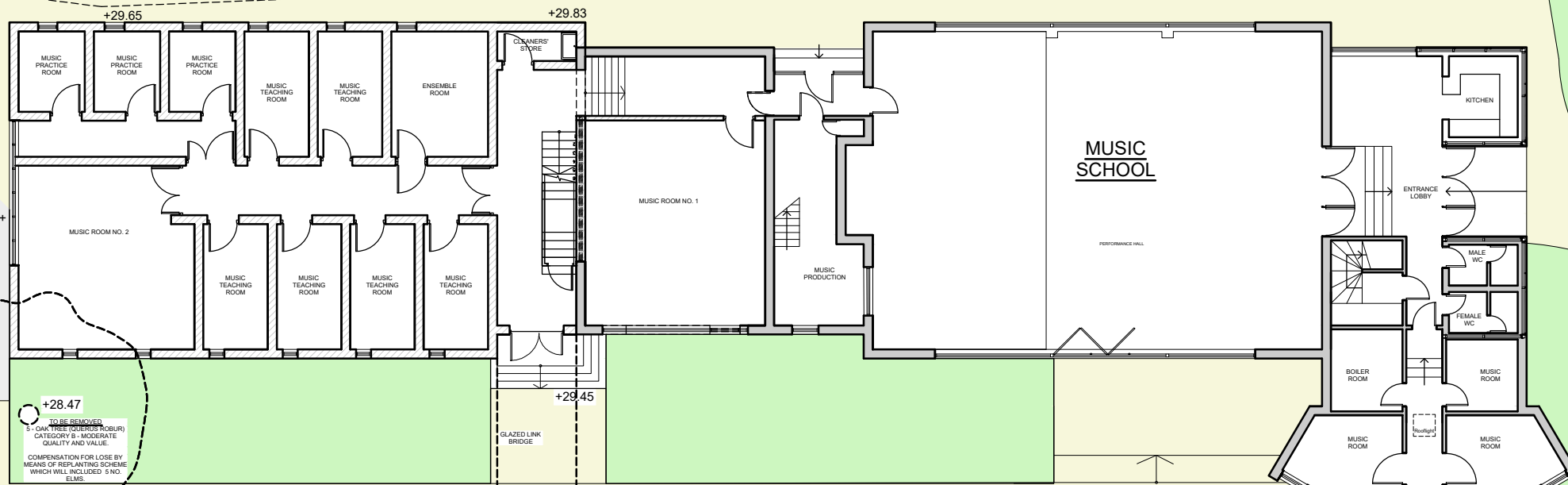
All levels and dimensions are to be checked on site.

This drawing is to be read in conjunction with all relevant consultants drawings and specifications, together with safety plan requirements.

Copyright: This drawing must not be copied, amended nor reproduced without the prior written agreement.

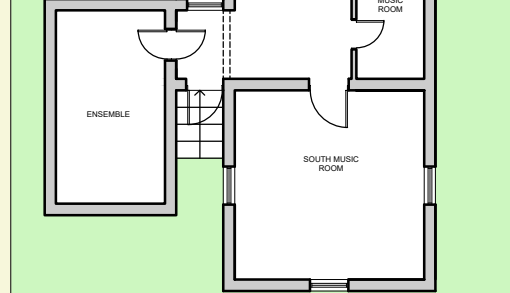
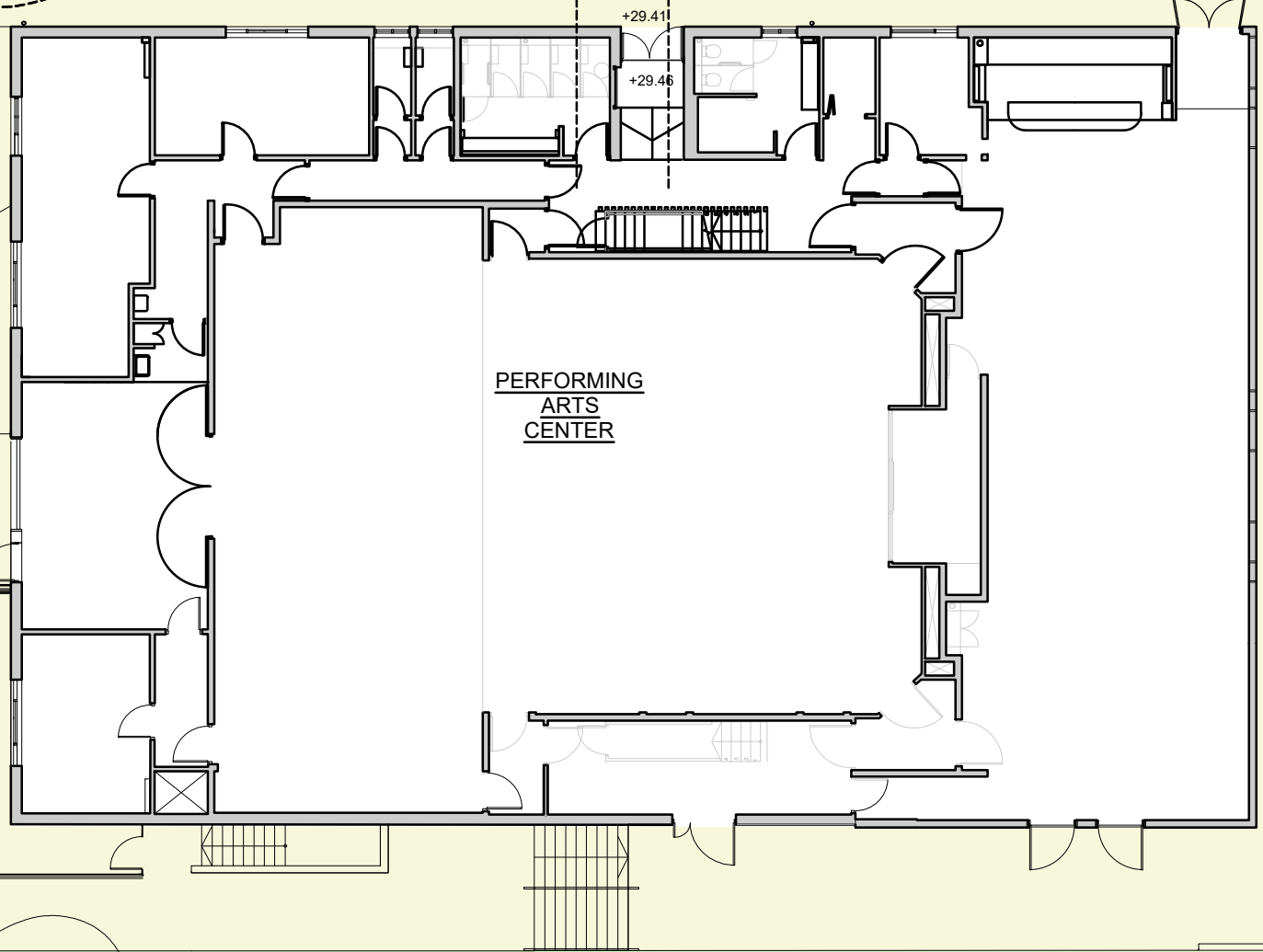


CLASS ROOM BLOCK



+28.47
TO BE REMOVED
5-DAY TREE REMOVAL (RUBBISH)
CATEGORY B - MODERATE
QUALITY AND VALUE
COMPENSATION FOR LOSS BY
MEANS OF REPLANTING SCHEME
WHICH WILL INCLUDE 5 NO.
ELMS.

+28.26



BUILDING SOLUTIONS CONSULTANTS LTD.

34 Boundary Road, Hove, East Sussex, UK, BN3 4EF. Tel: 0845-686-0036. Fax: 0845-686-0063

PROJECT		Music School, Hurstpierpoint College	
DRAWING		Proposed Ground Floor Plans	
STAGE	PLANNING	JOB NO. :	682
		DATE :	01/08/2018
DWG NO.	AL-201	SCALE	1:200 @A3
		REVISION :	-
		DRAWN :	DB

Do not scale: use figured dimensions only: check dimensions on site: notify BSC of any discrepancies: copyright BSC Ltd.